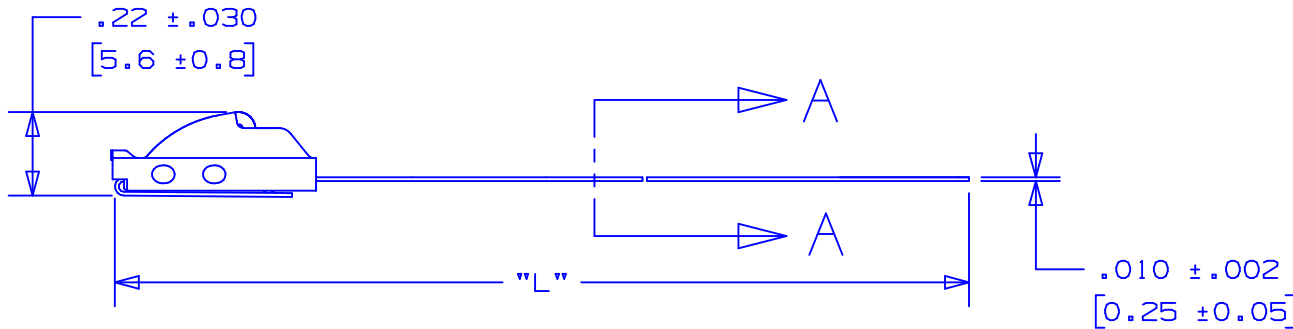
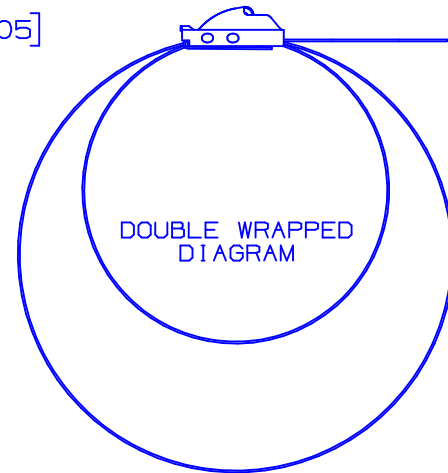


PANDUIT PART NO.	PACKAGE QTY.	MAX BUNDLE DIA	LENGTH L ±.2 [ 5 ]
MLT2DH-L	50	2" [ 50 ]	18.5" [ 470 ]
MLT4DH-L	50	4" [ 101 ]	28.0" [ 711 ]
MLT5DH-L	50	5" [ 127 ]	34.0" [ 863 ]
MLT6DH-Q	25	6" [ 152 ]	40.0" [ 1016 ]



SECTION A - A  
SCALE: 6x



BODY WRAPS AROUND TWO TIMES  
ENTERING HEAD TWICE  
(NOT TO SCALE)

NOTES:

- 1.) APPLICATION TOOLS - GS4MT, PPTMT, ST2MT, ST3MT, AND HTMT
- 2.) MINIMUM LOOP TENSILE STRENGTH - 600 LBS. (2669 NEWTONS) WHEN TESTED ON A 1.5" MANDREL.
- 3.) [ ] DENOTES DIMENSION IN MILLIMETERS
- 4.) TOLERANCES:  
 .XXX = ±.010 [ .25 ]  
 .XX = ±.02 [ .5 ]  
 .X = ±.03 [ .8 ]  
 ANGLES = ±2°
- 5.) MATERIAL: 304 STAINLESS STEEL

S41142\_03

03	8/04	JAMB	DPN	ⓑ REMOVED "AISI NO.1 FULL RADIUSED" & REPLACED WITH "FULLY ROUNDED"	11907	CCH	JJB
02	6/04	JAMB	DPN	UPDATED DBL LOOP MLT BODY TO SHOW SINGLE RAMP	11722	CCH	JJB
01	10/03	BRH	DPN	Ⓐ ADDED ST3MT TO APPLICATION TOOLS NOTE	11162	CCH	JJB
00	8/03	JAMB	DPN	RELEASED	10932	CCH	JJB
REV	DATE	BY	CHK	DESCRIPTION	ECN #	PM	CUST



CORP. TINLEY PARK, ILLINOIS

DOUBLE WRAPPED METAL LOCKING TIE  
HEAVY SERIES -304 STAINLESS STEEL

DRAWN BY	CHK'D	SCALE	DRAWING NO.
JAMB	DPN	2x	S41142